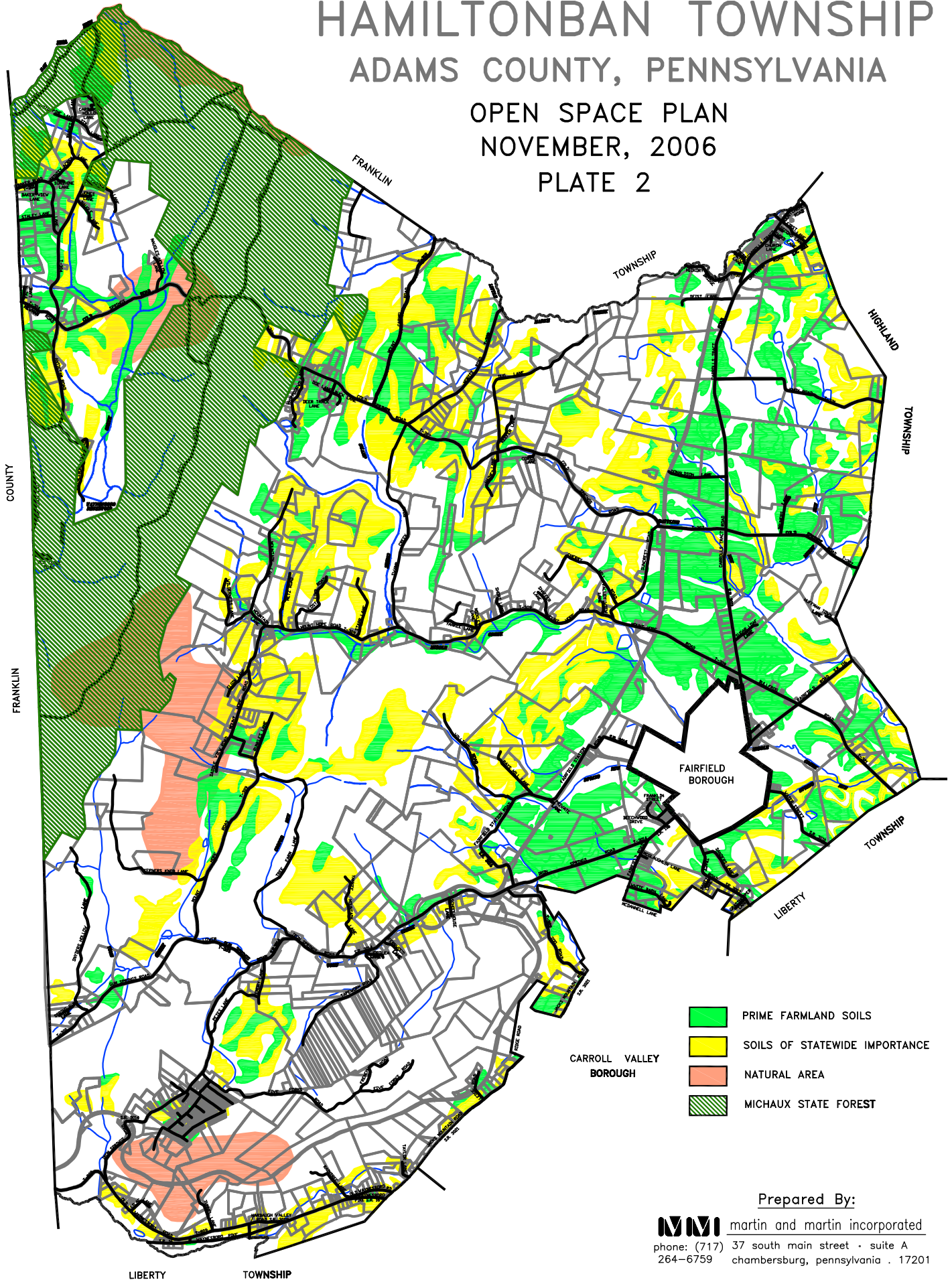


HAMILTONBAN TOWNSHIP ADAMS COUNTY, PENNSYLVANIA

OPEN SPACE PLAN
NOVEMBER, 2006

PLATE 2



- PRIME FARMLAND SOILS
- SOILS OF STATEWIDE IMPORTANCE
- NATURAL AREA
- MICHAUX STATE FOREST

CARROLL VALLEY
BOROUGH

Prepared By:



martin and martin incorporated

phone: (717) 264-6759 37 south main street · suite A
chambersburg, pennsylvania · 17201